

# LOCAL LINKS

[www.locallinksmedia.co.uk](http://www.locallinksmedia.co.uk)

[www.facebook.com/locallinks magazine](http://www.facebook.com/locallinks magazine)

ISSUE 129

FREE

**LOVE IS LOVE**  
50 years since Stonewall

**WONDERFUL  
WIMBLEDON**

Fun facts about the tournament.

**WIN a £200 VOUCHER**  
from **Home of Floors**

Check out our

**What's On Guide**

full of local and community events

Your independent, free local magazine

Delivered free to Airewas, Barton under Needwood, Fradley, Rangemore, Tatenhill & Yoxall



## Pool House Equine Clinic

Putting your horse first

Our seventeen equine vets are all passionate about providing a wide range of top quality care for your horses and ponies. We offer a unique range of expertise which, coupled with our modern equipment, enables us to provide bespoke treatment for your horse.

All Routine Work  
Colic Surgery  
Fertility Work  
Performance Investigation  
Headshaking Treatment  
Standing MRI Scanner  
Advanced Dentistry  
Lameness Clinics



Crown Inn Farm, Rykneld Street  
Fradley, Lichfield, Staffordshire, WS13 8RD  
01283 799700  
equine@poolhousevets.co.uk

[www.poolhousevets.co.uk](http://www.poolhousevets.co.uk)

# LOCAL LINKS



Dear Readers,

Welcome to our June issue! This month we've got a helpful 'How To' on how to make beeswax food wraps. They'll keep your sandwiches together for lunch, help the environment and keep bees in jobs! What's not to love!

We've also got a head's up for July coming your way, it's Britain's 'Festival of Archaeology'! Some of the best in British heritage has been painstakingly tickled out of the dirt with a paintbrush so getting yourself along to an archaeological site will really help history come to life!

If like us, you suffer a little fogginess in the old noodle, we've got some fab tips on getting your brain in training!

The **LOCAL LINKS** team

## ISSUE 129

### SALES

Heather Digby  
Sarah Deakin

### DESIGN

Liona Baldwin

### ACCOUNTS

Jan Evans

**01283 564608**

local@locallinksmedia.co.uk

Local Links Media,  
Suite 29,  
Anglesey Business Park,  
Anglesey Road,  
Burton-on-Trent,  
DE14 3NT

www.locallinksmedia.co.uk

facebook.com/  
locallinksmagazine



### CONTRIBUTORS

Including:  
Angela Sargent, Home of  
Floors, Rebecca Tucker, Alan  
Parsons

**niche**  
architecture

- Extensions
- Conversions
- Commercial Buildings
- New Builds
- Self Builds
- Planning Applications
- Building Regulations

Call us on **01283 499451**  
[www.nichearchitecture.co.uk](http://www.nichearchitecture.co.uk)  
[enquiries@nichearchitecture.co.uk](mailto:enquiries@nichearchitecture.co.uk)

### Next issue deadline:

Tue 9th July

### Next issue out from:

Wed 17th July

This magazine  
delivered free to:

Arewas, Rangemore,  
Barton, Tatenhill &  
Fradley, Yoxall

We also deliver a  
magazine free to:

Branston,  
Brizlincote Valley, Stretton &  
Rolleston, Walton on Trent

**DISCLAIMER** - The accuracy or content of any advertisement is not warranted by Local Links Media, nor do Local Links Media endorse or guarantee any of the products or services advertised, except any advertisement expressly relating to our services. We are not to be held responsible for any inaccuracies in the adverts nor to any consequences arising from inaccuracies. We are not to be held responsible for error in printing, damage or loss. It is the advertisers responsibility to ensure conformity with the Trades Descriptions Act 1975; Business Advertisements Disclosure 1977; Sex Discrimination Act 1975; and consumer Credit Act 1974. All artwork created by Local Links Media remains the property of Local Links Media and therefore must not be used in any other media without permission, as this is a breach of copyright laws.



# APS TYRES 2019 LTD

NEW & QUALITY PART WORN TYRES

Unit 1, APS Business Park, Wetmore Road,  
Burton Upon Trent, Staffs, DE14 1PL

Tel: 01283 526 868

- Stockist of Quality New & Part Worn Tyres with over 10 Years Experience.
- 4 x 4 & Run Flats in Stock.
- Puncture Repairs & Wheel Balancing.



**HOLIDAY WORKSHOP**

Stagecoach Burton

## PUT ON A SHOW

Make friends and build confidence at our theatre workshops

**NON-STAGECOACH STUDENTS WELCOME!**

**14th - 16th August**

Age: 4 - 6 year olds	Age: 6 - 18 year olds
Time: 9:00am - 12:00pm	Time: 9:00am - 3:30pm
Performance: Friday at 11:30am	Performance: Friday at 3pm
Cost: £75	Cost: £125 (£85 for siblings)

Venue: Burton and South Derbyshire College, Lichfield Street, Burton upon Trent, DE14 3RL

**STAGE COACH**

[stagecoach.co.uk/burtonupontrent](http://stagecoach.co.uk/burtonupontrent)

07956139721

[www.bluecanaryhc.com](http://www.bluecanaryhc.com)

[info@bluecanaryhc.com](mailto:info@bluecanaryhc.com)

07738080725



Social Media Management

Content Creation

Online Retailing





**AstlePaterson**

When trusted experience matters

Troublesome tenants?

# We can get back your property

Liam O'Shea offers a fixed-fee service for getting back your property from difficult tenants. He specialises in working on behalf of Landlords and Letting Agents throughout Burton upon Trent and the surrounding areas.

*Burton upon Trent's first choice for Landlord legal services*



BUSINESS & COMMERCIAL • CONVEYANCING • FAMILY • LITIGATION • WILLS, INHERITANCE TAX & PROBATE • EMPLOYMENT

**01283 531366**

[www.astlepaterson.co.uk](http://www.astlepaterson.co.uk)

Clay House, 5 Hominglow Street  
Burton upon Trent  
Staffordshire, DE14 1NG

**Liam O'Shea**  
Director & Solicitor  
Head of Litigation



# BUZZ OFF!



## WASP NESTS CLEARED

only **£44.00** inc VAT  
UP TO GUTTER LEVEL



Rodents  
Bird Control  
Flies  
Insects  
Wasps & Bees

Call **01283 713768**

[www.midlandpestcontrol.com](http://www.midlandpestcontrol.com)

Midland Pest Control Ltd  
Unit 3, Old Barn Farm, Roseton Road, Walton-Upon-Trent DE12 8LR



# Dirty Oven?

**Karen's** £5 Off Promotion\*  
**Ovengleam**

Ovens, Hobs, Agas,  
Microwave Ovens,  
Range Cookers,  
Cooker Hood  
Extractors, etc.

Biodegradable, fume free,  
non corrosive.

**Spectacular Results!**

Find us on Facebook  
[www.facebook.com/karensovengleam](http://www.facebook.com/karensovengleam)

**01283 500065**

[www.karensovengleam.com](http://www.karensovengleam.com)

Your Local Oven Cleaning Specialist

\*Terms and Conditions apply. See [www.karensovengleam.com](http://www.karensovengleam.com)

# M C B Electrical

OVER 25 YEARS EXPERIENCE



- Rewires, New Builds, Extensions
- Consumer Unit Upgrades
- Showers, Cookers, Heating
- Sockets & Telephone points
- Internal / External lighting
- Testing & Inspecting
- Fully Insured & Compliant to IEE Regs



Free, Friendly, No Obligation Quote

**Tel: 01283 532074**

**Mob: 07890 003 979**

**Email: [m.c.b.electrical@btinternet.com](mailto:m.c.b.electrical@btinternet.com)**

**Web: [www.electriciansinburtonuponrent.co.uk](http://www.electriciansinburtonuponrent.co.uk)**

5 Nicklaus Close, Branston, Burton on Trent, Staffordshire DE14 3HP



Business  
Accounting

## Lichfield Accountant

Providing individuals & small businesses face to face meetings at our Lichfield office, your home or work (inc weekend appointments).

### Services include

- HMRC Self assessment
- Payroll
- VAT
- CIS returns
- Companies House returns
- Cloud bookkeeping Sage/Quickbooks



Call Dean Robertson (CIMA)  
Chartered Management Accountant

**01543 307362** 8am-7pm (Mon-Sun)

**[www.BusinessAccountingLtd.com](http://www.BusinessAccountingLtd.com)**

# GET AWAY FROM IT ALL



We are specialists in installing loft ladders and hatches. We also supply and install loft boarding, lighting and insulation – to help you to escape all that clutter (and avoid the summer time blues of doing it yourself!)



### WHAT MAKES US DIFFERENT

- No waiting around. We arrive on time, every time
- Minimum 5 year guarantee on all our ladders
- Reliable, local company working in your home
- Extra confidence because we are accredited by Which? Trusted Traders
- Absolutely no mess and no fuss



Call Sam to book a FREE survey & quotation

**01785 595146**

**[WWW.ACCE54LOFTS.CO.UK](http://WWW.ACCE54LOFTS.CO.UK)**

\*with every loft ladder fitted subject to availability

# Wonderful Wimbledon

**W**e near that time of year when bright red strawberries get blanketed in a good dollop of smooth white cream and washed down with an equally fruity and lightly boozy glass of Pimms! Yes! Wimbledon is upon us!

Wimbledon is steeped in tradition, the inaugural Wimbledon Championship was held in 1877, making it the oldest tennis tournament in the world. Over the years the tournament has amassed a plethora of traditions, quirks and fun facts, so here's a few!...

Almost a quarter of a million glasses of Pimms are drunk each year at the tournament. By just the spectators we assume!

28,000kg of strawberries and 7,000 litres of cream are consumed by peckish fans.

Every year 700 children apply to be ball kids but only 250 are chosen.

A staggering 54,250 tennis balls are used during the tournament. Afterwards they don't go to waste, they're sold to tennis clubs and spectators.

Speaking of the humble tennis ball, did you know that they were traditionally white but were replaced with a yellow version in 1986 to be more visible to TV cameras!

Wimbledon is the only Grand Slam tennis

tournament to be played on grass and during the event is cut to a height of 8mm!

A Harris' Hawk called Rufus flies over the courts every morning of the tournament to scare off pesky pigeons that might otherwise ruin people's day out.

The winners of both the Men's and Women's finals each take away a prize of £2.25m.



**Barton Handyman Services**

HOME REPAIRS & REFURBISHMENT & MORE  
PAINTING / DECORATING  
GARDEN TIDYING FENCE REPAIRS  
NO JOB TOO SMALL  
FROM CHANGING A BULB TO POINTING A WALL GIVE ME A CALL

**PHONE PETER 07740026085**

CRB / DBS CHECKED TRADES PERSON



**NEEDWOOD**  
PLUMBING & HEATING SYSTEMS

INSTALLATION MAINTENANCE & REPAIR TO DOMESTIC PLUMBING & CENTRAL HEATING SYSTEMS

Telephone: 0845 838 7808  
Mobile: 07760 780842  
email: [info@needplumbing.com](mailto:info@needplumbing.com)  
[www.needplumbing.com](http://www.needplumbing.com)

 ESTABLISHED 1983 

# EASY GLIDE

## GARAGE DOORS



**The EASY GLIDE Garage Door is an exceptional garage door system - THE BEST IN THE UK.**

Open and close the door at the push of a button from within the comfort of your car. Our automatic garage doors enhance the look of your property and have great thermal values keeping your property warmer.

Unit 11, Falcon Business Centre, Hawkins Lane, Burton on Trent DE14 1SG

# 01283 480 505

[www.easyglidegaragedoors.co.uk](http://www.easyglidegaragedoors.co.uk)

We take out your old door, remove from site and replace with a new insulated electric roller door complete with 2 remote controls...

# FOR ONLY £699

*Based on a white door 7ft x 7ft*

## Cash4Clothes4You

**Bring your bags to our Burton depot  
Best prices in the area!**

Burton Upon Trent  
Unit 2  
Manor Trading Estate  
Hawkins Lane  
Burton Upon Trent  
DE14 1QX



**£4.50 per 10  
kilos  
Equivalent to the  
best price!**

### YES PLEASE

- Clean wearable clothes
- Bags, belts, hats
- Pairs of shoes

### NO THANKS

- Soiled or damp clothes
- Duvets and Pillows
- Work clothes or badged school uniform

Opening hours:  
Mon - Sat 10am till 5pm  
For enquiries or  
collections please call  
01283 480711  
Free and easy parking

Like us on Facebook please:  
[Cash4clothes4you](https://www.facebook.com/Cash4clothes4you)



## Cash4Clothes4You



**Birthday Parties on The Mug Tug  
Our Narrowboat is THE place to be**

**Paint a pot** **Foam Clay** **Build-a-Bear** **Canvas Painting**

**THE MUG TUG** For all children aged from 0 to 100 years!  
Great family fun for all Generations  
to enjoy together on our narrowboat

Barton Marina, Barton under Needwood, DE13 8AS  
Tel: 01283 711341 [www.themugtug.co.uk](http://www.themugtug.co.uk)



# Growth Spurt!

by Alan Parsons

Suddenly everything is growing! - After a slow start everything in the garden has started to burst into life. Green shoots are everywhere, buds are opening up and the birds are working overtime to feed their chicks. So it is important to get on top of things before it all gets out of hand.

Even though plants in the ground and pots are shooting up it is well worth giving everything a feed to keep them healthy. Pot plants will need some extra nourishment if they are to flower well, using a good quality feed watered in. For open beds chicken pellets spread around will do the job, and these provide nourishment for quite a time. Whether you are feeding pot plants or those in the ground do use the correct dosage, as too much can cause damage. Plant feed is like wine, one glass is very nice but a whole bottle, not so good. DIY stores and nurseries have a very good range of feeds that are not too expensive.

If you wanted to grow some plant, vegetable or herb from

seed but never got around to it, do not despair. Although we started some sweet peas, tomatoes and sunflowers from seed, keeping them in our conservatory during the cold spells, we have also bought some very healthy herbs and vegetable plants from our local DIY shop. This saved us space and meant we got just the right amount of healthy plants to put into pots or the ground.



You should still be able to get a wide range of plants that you could replot or put in the flower beds straight away. For herbs such as basil we often buy living herbs in pots from the supermarket. We then put them in bigger pots with additional compost and they last very well. We use a lot of

fresh mint and chives when cooking so these are kept on the herb ladder outside.

If we are going to have a summer as hot and dry as last year then regular watering is essential. Plants growing in pots dry out very quickly, especially if it is windy, so a daily water should be part of the routine.

This is also the time of course when garden pests such as white fly and slugs, suddenly appear from nowhere to ravage your crops and plants. There are numerous methods of control and as with plant feeds they should be used according to instructions. Slug pellets only need to be put on sparsely and it is also a good idea to pick up as many dead snails as possible and bin them so that the birds do not eat them.

This is a wonderful time of year in the garden, full of promise of flowers and fruit, vegetables and herbs, to come. Most importantly of all take the time to sit in a chair with your drink of choice and enjoy it on a sunny day.



# THE ALPHABET GIFT SHOP



*Fabulous Personalised Gifts & CoSy Coffee Shops*

44 Station Rd, Mickleover DE3 9GH T: 01332 513033 [www.thealphabetgiftshop.co.uk](http://www.thealphabetgiftshop.co.uk)

OPEN Mon-Sat 9 - 5.30, Sunday 10-3pm

9-10 Union Street, Burton-on-Trent DE14 1AA T: 01283 749933

OPEN Mon-Fri 8.30 - 5.30, Sat 9-5.30, Sunday 10 - 4pm





**All Aspects of Tree Surgery:**

- Thinning
- Reshaping
- Crown Lifting
- Dead Wooding
- Hedge Cutting
- Health Inspections




Fully insured, professional, friendly, competitive and qualified.


Call Chris for a Free Quote

**01283 821681**  
**07834 805707**

email: [flichwoodtrees@gmail.com](mailto:flichwoodtrees@gmail.com)  
[www.flichwoodtreeservices.co.uk](http://www.flichwoodtreeservices.co.uk)



Based in the heart of Staffordshire in the picturesque village of Alrewas, our shop is packed with ideas and inspiration for your home. Incorporating Jo Raybould Interior Design within, for those who might require the services of a professional designer.



*New accessories ranges arriving weekly*

[needwoodliving.co.uk](http://needwoodliving.co.uk)  
136 Main Street Alrewas, DE13 7ED  
01283 711 272

# By The Barn *by Angela Sargent*



**H**alf way through the year already! Lambs and calves are growing fast and crops are thickening and green.

Swallows flit in and out of the old stables or soar and sweep through the air, catching insects to take back to feed to ever open mouths.

Chiff chaffs noisily sing in the trees, having arrived earlier in the year and Yellowhammers chatter along the hedges filled with delicately pink tinged

flowering dog rose. The dawn chorus is at its peak.

You'll notice that tramlines are conspicuous now and are used repetitively to avoid flattening the crop- these are the tractor tyre marks made originally when the crop was first instigated (and a giveaway in historical films as they are relatively modern).

Another disingenuous claim made against farming is that it takes 15,400 litres of water to produce 1kg of beef. But what is not made clear, is that 83% of that water is natural, i.e. rainfall via grass. The intensity and scale of production and type of feed has an impact on the water footprint of animals

and here in the UK it is a totally different system to the feedlots of other countries, a totally low impact and sustainable one.

It's time for an important day in the farming calendar - 'Open Farm Sunday' on June 9th - a day when normal working farms open their gates to allow people to see exactly how food is grown and answer questions about production. **www.farmsunday.org**

Don't rely on social media stories from groups with their own agendas, find out for yourself!

Follow Angela on Twitter **@bythebarn**

## Architectural Design



**Call us on 01283 499451**  
**www.nichearchitecture.co.uk**  
**enquiries@nichearchitecture.co.uk**

- Planning Applications
- Building Regulations
- Building Design

We provide the complete architectural service from planning through to construction. Our drawings are of the highest quality and accuracy with exceptional attention to detail. **Please contact us for a free no obligation initial consultation.**

# Dry Carpet Cleaning

**zero dry time**<sup>TM</sup>

Dry Carpet, Upholstery & Hard Floor Cleaners

- Removes spills & spots
- Sanitize & deodorise
- Deep cleans & lifts carpet pile

**Picture this... in your home**

**Nice Fresh Clean  
Upholstery on  
Leather • Suede • Fabric**



**Locally based**

You can call us for FREE on

**0800 180 49 30**

[zerodrytime.com](http://zerodrytime.com)

**Get Main Room Cleaned  
save 50%  
on all further rooms  
+ Free Stain Protection**

We also clean hard floors, tiles inc Grout, Karndean, Amtico and Wooden floors - Ask for a quote

## ENTERPRISE ROOFING

Enterprise Roofing is a family run business with over 25 years experience specialising in a complete flat roofing service. We can also enhance your roofline with UPVC Fascias, Soffits & Guttering.

### SPECIALISTS IN ALL ROOFING WORK

- All roofing work undertaken
- All types of flat roofing
- We provide GPR rubber roofing
- Full replacement soffits fascias & guttering

**CALL US ON:**

**01283 499920 OR 07423 569139**



[info@enterpriseroofing.co.uk](mailto:info@enterpriseroofing.co.uk)  
[www.enterpriseroofing.co.uk](http://www.enterpriseroofing.co.uk)

**Simon  
Richardson**  
Legal Services  
Limited



Former partner and head of private client services at Smith Partnership with over 30 years' experience in all areas of the law, latterly specialising in:-

- Advice on protecting your home against care home fees
- Asset protection from tax
- Wills
- Lasting Powers of Attorney
- Administration of deceased estates including contested estates
- Property matters including disputes
- Appointments available 7 days a week, within and outside office hours

**Telephone: 07495 491328  
or E-mail: richsdr@aol.com**

Consultations available at your home for no extra charge

# Fifty Years Proud

This year we mark the 50th anniversary of the Stonewall riots that took place in 1969. The riots were a series of spontaneous, violent demonstrations by members of the gay (LGBT) community against a police raid that took place in the early morning hours of 28th June 1969, at the Stonewall Inn in the Greenwich Village neighbourhood of Manhattan, New York City. They are widely considered to constitute the most important event leading to the gay liberation movement and the modern fight for LGBT rights across the world. Gay pride events are held annually across the world to celebrate gay rights. Gay Americans in the 1950s and 1960s faced an anti-gay legal system. Early activist groups in the U.S. sought to prove that gay people could be assimilated into society, and they favoured non-confrontational education for homosexuals and heterosexuals alike. The last years of the 1960s, however, were very contentious, as many social/political movements were active, including the civil rights movement, the counterculture of the 1960s, and the anti-Vietnam War movement. These influences, along with the liberal environment of Greenwich Village, served as catalysts for the Stonewall riots.

Very few establishments welcomed openly gay people in the 1950s and 1960s. Those that did were often bars, although bar owners and managers were rarely gay. At the time, the Stonewall Inn was owned by the Mafia. It catered to an assortment of patrons and was known to be popular among the poorest and most marginalized people in the gay community: drag queens, transgender people, effeminate young men, butch lesbians, male prostitutes, and homeless youth.

Police raids on gay bars were routine in the 1960s, but officers quickly lost control of the situation at the Stonewall Inn. Tensions between New York City police and gay

residents of Greenwich Village erupted into more protests the next evening, and again several nights later. Within weeks, Village residents quickly organized into activist groups to concentrate efforts on establishing places for gays and lesbians to be open about their sexual orientation without fear of being arrested.

After the Stonewall riots, gays and lesbians in New York City faced gender, race, class, and generational obstacles to becoming a

cohesive community. Within six months, two gay activist organizations were formed in New York, concentrating on confrontational tactics, and three newspapers were established to promote rights for gays and lesbians.

Within a few years, gay rights organisations were founded the world over. On June 28, 1970, the first gay pride marches took place in New York, Los Angeles, San Francisco and Chicago commemorating the anniversary of the riots.

# 50 YEARS



# BLAKENHALL PARK

High Quality modern Offices, Storage and Containers in beautiful rural settings

## Fed up with the city? GO GREEN!

- Enjoy Barn Converted offices with original features
- Benefit from ample parking for your staff and visitors
- Secure site with CCTV • Comfort heating/air conditioning
- Flexible container/storage options



[www.blakenhallpark.co.uk](http://www.blakenhallpark.co.uk)

Blakenhall Park, Barton under Needwood, Barton on Trent, DE13 8AJ.  
Tel: 01283 713 901 Email: [info@blakenhallpark.co.uk](mailto:info@blakenhallpark.co.uk)

# Discover the Loft Space in your home!



Loft ladder, light & Switch plus 50sqft flooring. FREE fitting in less than a day >>>>

From as little as...  
**£297**  
+VAT

Install a safe, well fitted, fully guaranteed loft ladder and make **more use of your loft!**

Over 10,000 people have chosen us to fit their loft ladder, this is because we offer:

- A FREE home visit
- Fully guaranteed
- A large selection of ladders to choose from
- A FREE written quotation

"I have been in my loft today for the first time ever in the 40 years I have lived in this house - they have done an amazing job, I am very impressed!"  
John




Call us now on  
**0800 035 9880**  
or  
**01332 800411**  
Or visit  
[www.morethanloftladders.co.uk](http://www.morethanloftladders.co.uk)

more loft than ladders  
"cost effective space"

# HiQ Burton Now under new management.



**FREE**  
tyre  
safety  
check.



**FREE**  
health  
check &  
washer fluid top-up

**MOTs**   
only **£45**

**10% OFF** when presenting this advert.



**HiQ Burton**  
Unit 4, Crown Industrial Estate  
Anglesey Road  
Burton-on-Trent DE14 3NX  
**01283 561931**  
[www.hiqonline.co.uk/burton-on-trent](http://www.hiqonline.co.uk/burton-on-trent)

Ask inside  
for details.

# HiQ

Tyres & Autocare

Tyres • Exhausts • Brakes • Batteries • Servicing • MOTs

# Digs That Delight

Coming up in July from 13th - 28th is Britain's 'Festival of Archaeology'.

Interestingly, this year we celebrate the 10th anniversary of the discovery of one of our most notable local finds, the Staffordshire Hoard.

The Staffordshire Hoard is the largest hoard of Anglo-Saxon gold and silver metalwork yet found in the UK. It consists of over 3,500 items, amounting to a total of 5.1 kg (11 lb) of gold, 1.4 kg (3 lb) of silver and some 3,500 pieces of garnet enamelled jewellery.

The hoard is of considerable importance in Anglo-Saxon archaeology. The quality of the workmanship is extremely high

and especially remarkable in view of the large number of individual objects, such as swords and a helmet, from which many of the fragments in the hoard came.



If you're interested in visiting an archaeological site, why not pop along to Wall in Staffordshire. This site was an important staging post on Watling Street, the Roman military road to north Wales. The road network was crucial to the Romans' control over their empire. At staging posts like Wall weary Roman

officials, soldiers and imperial messengers could find lodging for the night and change their horses.

At Wall today you can still see the remains of an inn for travellers and the public baths, with its sequence of cold, warm and hot rooms. The museum provides a fascinating insight into life here and displays many excavated finds. You can find more information here: [www.english-heritage.org.uk/visit/places/wall-roman-site](http://www.english-heritage.org.uk/visit/places/wall-roman-site)

The festival of archaeology is coordinated by the Council for British Archaeology, which aims to showcase the very best of archaeology for everyone. To find more events nearby, visit: [www.festival.archaeologyuk.org](http://www.festival.archaeologyuk.org)

 **Meadowview**  
GARDEN SERVICES

- ✓ Hedge maintenance
- ✓ Grass mowing
- ✓ Garden clearance
- ✓ Ground maintenance
- ✓ Full waste carriers licence
  - ✓ Planting
  - ✓ Woodchip
  - ✓ Logs for sale
  - ✓ Fully insured

M: 07835 218 041 T: 01283 763572  
E: [gt.meadowview@gmail.com](mailto:gt.meadowview@gmail.com)  
W: [www.meadowviewgardenservices.co.uk](http://www.meadowviewgardenservices.co.uk)

 [www.meadowviewgardenservices.co.uk](http://www.meadowviewgardenservices.co.uk)

**Wood End Lane**  
**Lichfield**  
**Staffordshire**  
**WS13 8NF**

**01543 418419**  
[www.midlandkarting.co.uk](http://www.midlandkarting.co.uk)

 **THE MIDLAND**  
KARTING EXPERIENCE

Over 17 years of karting experience means this facility is one of the top karting outdoor circuits in the UK. Whether you're looking for a family fun day out or a team building event with a difference or a corporate hospitality day.

- Endurance, Sprint & Grand Prix Racing
- Stag & Hen Parties
- Mini Moto / Pit Bikes
- Corporate
- Family
- Adults
- Gift Vouchers

**Book online or call us to reserve.**

**10% OFF**  
**WHEN YOU BOOK ONLINE**



**TOP**  
FURNITURE

VISIT US AT STATION ROAD, UTTOXETER, ST14 8AX  
WWW.TOPFURNITURE.CO.UK • TEL - 01889 560999

**Barton**  
DRIVEWAY CLEANING

Professional Driveway Maintenance.  
Why not have your drive or patio restored to its original condition?

- All surfaces as good as new!
- High power pressure wash
- No pressure soft wash
- Removal of slippery moss & weeds
- Fully insured
- No mess
- Local Barton resident

**CALL RICHARD ON: 07949 237 305**

**Elsigood Associates**  
BUILDING SURVEYING & ARCHITECTURAL DESIGN

Party Wall Specialists | Planning & Construction Design

Our team of Architectural Designers and Party Wall Surveyors offer a flexible and professional service that is tailored to your specific concerns and requirements relating to all residential property.

Our Architectural services include:

- Design Scheme Drawings
- Planning Permission Drawings & Submissions
- Building Regulation Approval Drawings & Submissions

As Party Wall Specialists:  
We will protect your interests under the Party Wall Act. So call us for free advice about how to comply with your obligations whether you are the

- Building Owner (Carrying out the works)
- Adjoining Owner (Affected by the works)

We will also help remove the burden and prepare Health and safety Files for your projects.

**Call us on: 01283 617 612**





SKY CONSERVATORY ROOFS  
AND DOORS LTD

Transform your Conservatory

Your **local** business near Barton-Under-Needwood

- Use your conservatory all year round
- No planning permission required
- Increase the useable size/value of your home
- Feel the difference in your home **straightaway**, the job takes less than a week.
- Call now for free quotation.



Call us on:

**01283 713333**

Visit us at: [www.skyconservatoryroofsanddoors.co.uk](http://www.skyconservatoryroofsanddoors.co.uk)



# The George & Dragon

Our great local pub is famous for:

Food 7 days a week - Stunning new Beer Garden - Cosy  
Snugs - Local Cask Ale

Our Weekly Food Offers:

Mondays - Fridays: Lunch Club £6	Fridays - 2 Steaks & bottle of wine £20
Mondays All Day: All Grills £7	Saturdays All Day - All burgers £6
Wednesdays All Day - Curry £6	Sundays - Roast £8.45
Thursdays - 2 Meals & bottle of wine £20	



[georgeanddragonalrewas](https://www.facebook.com/georgeanddragonalrewas)

[www.georgedragonalrewasburtonupontrent.co.uk](http://www.georgedragonalrewasburtonupontrent.co.uk)

120 Main Street - Alrewas - DE13 7AE Tel: 01283 487398

## CW Tree Services



Burton Tree Surgeons, Specialists in Tree Care and Maintenance with over 25 years experience

Fully qualified to NPTC standard and fully insured for peace of mind

Hedge cutting & maintenance work

Ecology & Recycling - as well as taking trees down, we strive to recycle as much of the tree as possible

Thinning, shaping and pruning we can deal with all your garden maintenance

Stump grinding service also available

We undertake Local Authority, Private Business and Commercial contracts and also provide services for the general public

Tree surveys & mortgage reports undertaken



Call us today on:

**01283 711 702 / 07774 917 385**

Email: [cwtreeservices@gmail.com](mailto:cwtreeservices@gmail.com)

**[www.cwtreeservices.co.uk](http://www.cwtreeservices.co.uk)**

R.E. Russell - Trading as

*Fabriclean*  
SPECIALIST CLEANERS

**Upholstery inc:**

Leather, Carpets, Oriental Rugs,  
Curtains & Soft Furnishings

**Deodorising inc:**

Carpets & Fabric Protection Products  
All Services Fully Insured

Contact

**Bob Russell**

Telephone: 01543 432356

Mobile: 07701 027311

email: [bob-russell@hotmail.co.uk](mailto:bob-russell@hotmail.co.uk)

A friendly, efficient service from an established family business since 1988.



## JNJ Construction Midlands Ltd

Building & Joinery Contractors

Extensions & Alterations

Kitchens, Bathrooms, Tiling & Natural Stone

Windows, Doors and Conservatories

Drives, Patios and Fencing

Plumbing, Heating & Electrical

Property Maintenance



3 The Square, Mosley Mews, Rolleston on Dove

**01283 845183 07946 497199**

[www.jnjconstructionco.co.uk](http://www.jnjconstructionco.co.uk)

# Purge the Plastic

Most of us can agree that there are always ways that we can do a little more to help our environment. The build up of single-use plastic in our oceans and landfill is saddening. So, to help you take a positive step, why not have a go at making these plastic free food wraps!

They're a great option because:

- They support the honeybees.
- Beeswax doesn't go rancid – it's entirely safe, so long as you're not allergic, and it is even anti-fungal and anti-bacterial, along with tree resin and jojoba, and helps keep your food safe from fungal growth and contamination.
- They're fairly inexpensive and will save money in the long run – especially if you are able to upkeep them.
- You can cut them to your preferential size.

Remember though...

They can't be used to wrap meat because they can't be cleaned with high heat. Please don't risk it.



## WHAT YOU'LL NEED

- beeswax chips
- powdered pine rosin – adds pliability and tackiness, making it easier to adhere with less heat.
- drizzles & splashes of jojoba oil – makes it softer and more pliable.
- 100% cotton fabric scraps, fat quarters, etc
- an iron
- parchment paper

## WHAT TO DO

Wash, dry, and cut your fabric to any and all sizes you feel you'll benefit from.

Add 2 parts beeswax to 1 part rosin (or less) and a few drops of jojoba oil into a saucepan

and melt over a low heat. The jojoba isn't necessary but it will help to make the wrap a bit softer.

Place your fabric onto a large piece of parchment paper and brush with your beeswax mixture, make sure that it soaks completely through the fabric but brush out excess.

Being very careful not to burn yourself on the hot wax, peel the fabric off the parchment paper and hold or pin up until set – it'll set within seconds!

To maintain your wraps...

Spot wash dirty areas with a lightly soaped, barely warm kitchen cloth. Also, don't scrub too hard.

When it's obvious your wrap needs some wax re-distribution, pop it into a 200 degree oven on parchment paper for 2 minutes. They'll come back out lovely and smooth.

Tip: In the case of sticky sandwich fillings and other messy foods, it may be worthwhile to wrap them first in a piece of parchment paper over the sandwich edges to prevent the sandwich goo from completely soiling the wrap.

**A.P. Hazell**  
 Est. 1983  
 Electrical Contrator

The old school standard  
 for all your domestic  
 electrical needs.

Please call  
 Ady:  
 07931298124  
 01283 845501

**Checkatrade**  
 Where reputation matters



at the cedars

Luxury Gifts &  
 Accessories that  
 are "A little bit  
 different but a lot  
 more special."



For the month of June only, we are  
 offering 10% discount if you present  
 a copy of Local Links.

Just off Main Street (behind No48),  
 Barton under Needwood, DE13 8AA  
 Open 10am - 4pm Wednesday - Friday  
 9am - 2pm Saturday  
**Phone: 07973 549685**



**RVT**  
 Rea Valley Tractors

**18% OFF  
 WALK BEHIND MOWERS!**



Contact Mick Reeves for details!  
 Mob: 07736 693158 Tel: 01283 821345  
 RVT Ashacres Industrial Estate, Draycott in the  
 Clay, Sudbury, Derby DE6 5GX  
 mickreeves@reavalleytractors.com  
 www.reavalleytractors.com

**JOHN DEERE STIHL**

# WIN!

## A £200 Voucher from Home of Floors!

### HOME of FLOORS



**T**his month a lucky reader can win a **£200 Voucher from Home of Floors.**

**Happy 10th Birthday Home of Floors!** Founded in 2009 Home of Floors is celebrating 10 years of being Burton on Trent's best Real Wood, Parquet, Laminate, Cork & Karndean Flooring specialist. Providing great flooring and value.

They supply top quality flooring brands such as Karndean, Quickstep, Kersaint Cobb, CoreTec, Balterio, Krono, Lifestyle, V4 Woodflooring, Furlong, Panaget, Berry Alloc, Lamett, Canadia and Villeroy & Boch to name a few!

They have an experienced installation team offering the highest standard of service. Their Burton showroom has easy access and their selection to choose from cannot be beaten!

Pop along to their showroom, open Monday - Friday 9am - 5pm and open Saturdays from 9am - 1pm.

Home of Floors also offer free home measuring, free estimates, DIY advice, local & national home delivery, installation service and floor repair. Everything you need to help you get your dream floor!

You can find more information at: [www.homeoffloors.co.uk](http://www.homeoffloors.co.uk)

To enter this month's competition, all you have to do is put your *name, address and daytime telephone contact number* on a postcard and send it to:

**Local Links Media  
Home Of Floors Competition  
Suite 29  
Anglesey Business Centre  
Anglesey Road,  
Burton-upon-Trent  
DE14 3NT**

Alternatively, you can e-mail your details to: [local@locallinksmedia.co.uk](mailto:local@locallinksmedia.co.uk)

The closing date for entries is the 16th of July, and the winners will be announced in our August edition. Good luck to everyone who enters!

Home of Floors Ltd  
Unit2 Burton Enterprise Park  
Hawkins Lane  
Burton-on-Trent  
Staffordshire  
DE14 1QG



t: 01283 544486  
e: [sales@homeoffloors.co.uk](mailto:sales@homeoffloors.co.uk)  
[www.homeoffloors.co.uk](http://www.homeoffloors.co.uk)

from as little as  
**£15**

# D-I-Why?



GreenThumb's annual treatments ensure your lawn looks lush, green and healthy. With prices starting from £15 per treatment, your lawn nightmare will soon be history.

**01283 735675**

**GreenThumb**  
LAWN TREATMENT SERVICE



Find us online at: [www.greenthumb.co.uk](http://www.greenthumb.co.uk)

- Are you embarrassed about your loose dentures?
- Do you want to eat the foods you love again?
- Do you have decayed, failing teeth?

**Our Denture Experts**

If you've Answered **YES** to the above

**WE CAN HELP YOU!**



Left: Richard Hazzledine, GDC: 128796  
Middle: Jamie Wright, GDC: 108755  
Right: Thomas Heath, GDC: 179192

Book your **FREE** consultation today!  
At one of our convenient locations below

Derby **01332 405358**

Coalville **01530 839000**

**BEAUTIFUL DENTURES**

Burton on Trent **01283 546161** Wolverhampton **01902 426808**

*Look Young & Feel Great!*

[www.beautifuldentures.co.uk](http://www.beautifuldentures.co.uk)

# Buff Brains

**W**hether you'd like to boost your memory skills or increase your mental health it doesn't sound like the obvious first step, but brain health is reliant on exercise!

There's no doubt about the physical benefits of exercise – but what about the benefits of exercise for your brain and emotions?

**1.** Stress relief – Exercise can have beneficial effects on stress and anxiety levels, leaving you feel more calm and relaxed.

**2.** Improved mood – Physical activity triggers endorphins that boost your mood and help you relax.

**3.** Focus and clear thinking – Physical activity delivers oxygen to the brain and related tissues.

**4.** Better sleep – Several research studies suggest links between regular exercise and improved sleep.

You don't just have to improve your fitness for a better brain, there are some mental exercises that you can do to make your thinking more agile too...

**1.** Draw with both hands at the same time, this will challenge both sides of your brain.

**2.** Read aloud to others or to yourself, it enables you to retain more of the information.

**3.** Eat with chopsticks. Well, just do anything that you find a natural process in a way that feels difficult for you, this forces your brain to adapt and learn new control skills.

**4.** Practice meditation. It can give you focus when information overload is getting on top of you!

**5.** Challenge your brain. make opposing hand gestures and then switch hands, try a peace sign with one hand and an ok sign with the other then try and switch as quickly as you can! It's not easy but you'll get better!



**Barn Store is an independent self-storage business**

We rent private storage units from 40 sq. ft through to 320 sq. feet for **COMMERCIAL** or **DOMESTIC USE**

### WHY STORE WITH US?

- FAMILY RUN BUSINESS - we live on the site
- RURAL LOCATION
- EASY ACCESS - no traffic congestion
- ALL ON ONE LEVEL - no lifts
- CLEAN, DRY, INSIDE STORAGE
- 24/7 ACCESS
- VERY COMPETITIVE RATES



### YOU HAVE

- EXCLUSIVE USE OF YOUR OWN SPACE
- THE ONLY KEYS
- NO NEED FOR LADDERS
- UNDERCOVER LOADING BAY
- SECURE, SAFE STORAGE



### OUR FACILITIES

- ELECTRONIC FOB DOOR ENTRY
- CCTV
- FULLY ALARMED
- FREE USE OF TROLLEYS
- PACKAGING
- SPECIALIST UNITS - store paintings, books, etc



**Tel: 01283 711 564 Mob: 07815 741 729**  
[www.barn-store.co.uk](http://www.barn-store.co.uk)

Sherholt Lodge,  
 Dunstall,  
 Burton on Trent  
 DE13 8BN

# What's On Guide

## SATURDAY 15TH JUNE

### Yoxall Village Fete

At the Golden Cup DE13 8NQ. 1.30 to 4.30. Teas, Cakes, Beer, BBQ. St Peter's School Children Dancing. Fun Dog Show. Uttoxeter Town Band. Plant, cushion and curio stalls. Games. Face Painting. Scalextric Grand Prix. Swarbour Duck Race. And the Grand Raffle.

### Burton Big Band Summer Concert

At St Mary's Church, Stretton, DE13 0HD, starting at 2pm. The Band will be playing all the classic hits from the swing era. Tickets cost £5 and include a cream tea during the interval. For more details and tickets, please contact 01283 561566.

## TUESDAY 18TH JUNE

### Burton Dance & Social Club

We invite and welcome anyone over 18 years of age. We meet every Tuesday Evening 8-11pm at Marstons Sports and Social Club, Shobnall Road, Burton-on-Trent. Activities include sequence, ballroom and line dancing to professional live music, bingo, raffles and food nights. Come along and join us to meet new friends. For more information contact Pauline: 01283 519159

## WEDNESDAY 19TH JUNE

### Burton Amateur Radio Club

Burton Amateur Radio Club meets every Wednesday evening at 7-30pm for nights on the air, construction projects, licence exams at all three levels with one to one tuition if required. New members are very welcome and we meet at Staphenhill Institute 23 Main St, Burton-on-Trent DE15 9AP Contact Bob 07812 146333 [www.g3nfc.co.uk](http://www.g3nfc.co.uk) or [club@burton-arc.co.uk](mailto:club@burton-arc.co.uk)

## THURSDAY 20TH JUNE

### Tea Dance

At the Priory Centre, Church Road, Stretton DE13 0HE - £3.50 including tea, coffee and biscuits. 1.30-3.30pm. Ring 07598159744 or email [larhiney@hotmail.com](mailto:larhiney@hotmail.com) for more information about above events.

### Rangemore & Tatenhill WI

Meeting at Henhurst and District Recreational Club on 3rd Thursday of every month, starting at 7.30 p.m. Lively and friendly group of ladies meet to enjoy good company, an interesting and entertaining programme of events and refreshments. New members and visitors of all ages welcome. For more information contact Marian on 07752160996

## FRIDAY 21ST JUNE

### Barton Gardens Festival

Burton on Trent close harmony group Fusion sing Songs from the Shows in St James Church, Barton under Needwood as part of the Barton Gardens Festival. In the church there is also an exhibition of art by Kara Strachan and Barton quilters. The charities supported this year are YMCA Burton, Footprints Orphanage Kenya and Saxon Hill School Lichfield. Tickets for the concert are available from Barton Post Office or on the door at £10.00. tickets include sparkling refreshments.

### Doveside WI Rolleston on Dove

Meet at the Rolleston Club, 15 Burnside, 9.30am on the 3rd Friday of every month. We're a large, friendly group with interesting speakers at the meetings and varied, numerous outings you can join in with. Why not come along for free and see what it's all about? Just turn up or email us at [dovesidewi@gmail.com](mailto:dovesidewi@gmail.com)

### Harp and a Monkey

A storytelling group who specialise in poignant, humorous and melodic short stories (traditional and original) about life, love and remembrance. Their performance will include a new project called 'The Victorians' - featuring folk, music hall, parlour songs and street music of that era and what it can tell us about the people and their lives. A truly stimulating and uplifting evening is assured. 8pm Tickets £14.00

### Bookstart Bear Club

4 week course - those who attend all 4 sessions will be given a free pack. Friday 7th, 14th, 21st and 28th FREE Open to children up to 3 years old 10:30 - 11:30 To book a place email [jenniferferoper.fss@sctsp.org.uk](mailto:jenniferferoper.fss@sctsp.org.uk) phone 07741 655709 or pop in to Lichfield Library info desk

## SATURDAY 22ND JUNE

### Gardens Festival & Teddy Extravaganza

Saturday 22nd & Sunday 23rd in Barton - 8 exciting rides for Teddies in the Churchyard and at the village pond. Teddies get a passport to ride for £5.00 from the passport office and get a tedical to check they are fit to fly. Twelve beautiful gardens will be open to visitors on Saturday and Sunday. Coffee or tea and cake can be purchased in several locations.

## SUNDAY 23RD JUNE

### Claymills Victorian Pumping Station

Guided tours given around one of Britain's largest Victorian steam pumping stations. Magnificent Victorian workshop where you can see steam restoration in action. Videos of the station in steam in the visitor centre. Contact: 01283 509929

## MONDAY 24TH JUNE

### Burton Art Club

Meets at Stretton Methodist Chapel Main Street, Stretton. Monday evenings 7.00pm to 9.00pm We are a lively group who share an interest in art and all abilities are welcome.

## TUESDAY 25TH JUNE

### Carers + Cafes

Carers + cafe meets in the Brewhouse every Tuesday from 10 o'clock to 12.30 pm organised by the Rotary club of Burton upon Trent it is for Carers and the cared for to meet with and make new friends, enjoy a cup of coffee or tea in a safe and friendly environment.

### Shakespeare Group

Interested in Shakespeare? Limited spaces available in Lichfield group. Read and watch Shakespeare's works Tuesdays 10 to 12 noon Call 01543 251556 .

## WEDNESDAY 26TH JUNE

### 1st Burton Guides

Every Wednesday Evening. A fantastic unit for girls aged 10-14. They will make friends, grow in confidence and learn lots of new skills. To make it better, all this is done through a wide range of activities, from ice skating to canoeing, and craft to cooking, there is something for every girl! Call: 07794 759608

## THURSDAY 27TH JUNE

### Barton-under-Needwood Flower Club

In house demonstration "Something to Celebrate" Barton Flower Club is 50 years old we invite you to join in our celebrations, refreshments and raffle 7.30pm at St James Church Hall everyone welcome non members £6.00 for more information ring Fiona Panter on 01283 712174

## FRIDAY 28TH JUNE

### Tots, Pots & Tales

Fridays at The Mug Tug, Barton Marina. Listen to a story and paint a pot related to the tale. Juice and biscuit for the Tots, Grown-ups welcome to bring their own hot drinks. 1.30pm to 2.30pm - See our website for more details. Call 01283 711341 to book.

## SATURDAY 29TH JUNE

### Alrewas Open Gardens

Open from 1pm to 6pm each day, featuring 26 venues with 19 interesting gardens to enjoy, including tea and refreshment venues, plant stalls, raffles, musical and craft artists, free children's Treasure Hunt, and free parking! Admission by Programme £5 per adult (valid for both days, accompanied children under 16 free), located on the A38 between Lichfield and Burton, near the National Memorial Arboretum.



# Find more events on our website

## SUNDAY 30TH JUNE

### Lichfield & District Ramblers

Various routes if you would like to walk with a friendly, organised group, why not join the Lichfield & District Ramblers? We walk every Sunday throughout the year. 01543 491469

## MONDAY 1ST JULY

### Meditation Class

Weekly Classes of Meditation on Mondays 1pm to 2.30pm and 7.30pm to 9.30pm we are a friendly group who meet for discussion and to meditate with a guided meditation. To join us Contact Kim 07580 551979

### Burton Prostate Cancer Support Group

Men suffering, being treated, or recently diagnosed with Prostate Cancer, plus spouses, are invited to join with a dynamic Support Group meeting at Burton Library, Riverside, DE14 1AH. You will be able to talk with fellow PCa sufferers, listen to interesting speakers and will be made most welcome. The BPCSG meet on the first Monday in the month except Bank Holidays. Always call to check meetings: 07478 889577, or email on: burton.prostate.cancer.suppgrp@gmail.com

## TUESDAY 2ND JULY

### Art Classes

Weekly classes at The Horseshoe, Tatenhill. Lessons will cost £10, or £8 if paid a half-term in advance. Please email or phone for further details or to reserve your place. Contact: Helen Tarr Tel: 07791 228 881

## WEDNESDAY 3RD JULY

### Burton Abbey WI

Meeting at the Brewhouse on the first Wednesday of the month at 10am to 12 noon. Good Speakers, refreshments, also days out organised. New members welcome. For more information contact Pauline Gaskin 01283 565620

### Burton Folk Dance Club

Burton Folk Dance Club meet every Wednesday (except 2nd Wednesday each month) at Rough Hayes Community Centre, Henhurst Hill, DE13 9PX. From 7.30 to 9.30pm. New members welcome. Contact 01283 812645.

### Barton-Under-Needwood WI

1st Wednesday of every month at The Village Hall, Crowberry Lane. Meeting 7.30-9.30 with good speakers, refreshments and fun. Organised events and trips throughout the year. New members and visitors always welcome.

## THURSDAY 4TH JULY

### Friendship Circle

Meets at 7.30 pm on the first and third Thursday of every month in the schoolroom at the rear of Stretton Methodist Church. We meet for activities, speakers, trips and friendship. All are most welcome. For further information contact Christine - 01283 543813.

## FRIDAY 5TH JULY

### Changes Support Meeting

A 12 Step Recovery Programme for Mental Distress, meetings held at Burton twice a week, please contact 01827 311006 for further information. Prior booking only. Peer Support Meeting Peel Croft Surgery, Lichfield Street, Burton 1-30-3-30pm. Wellness Workshops, Wednesdays & Fridays: 9-45-11-45 am Burton Fire Station, Moor Street, Burton.

## SATURDAY 6TH JULY

### French With Songs

French with songs, games and fun for children nearly 4 - 9 years, Saturday morning classes in Lichfield at the Tesco community room. Baby and toddler class too - learn to sing 'Wind the Bobbin up' in French! Email juliesfrenchclasses@gmail.com.

## SUNDAY 7TH JULY

### Friends of Fountains Summer Fete

From 11am to 2pm. Cream teas, cakes, refreshments and BBQ. There will also be traditional stalls including tombola, white elephant stall, bouncy castle , dancing, many stalls, Arena entertainment, grand prize draw, envelope game with lots of prizes to be won. Come along and join the fun!

## MONDAY 8TH JULY

### Fundraising Fashion Show

St Mary's Church in Stretton are hosting a fundraising Fashion Show by SOS Fashions on Monday 8th July starting at 7.30pm. There'll be ladies clothes from major High Street stores eg Top Shop, Dorothy Perkins, Next, plus designer labels The proceeds from the event will go towards the Church Restoration Project for new disabled toilet facilities. Tickets are £5 and are available from Laura Spencer on 01283 561566.

## TUESDAY 9TH JULY

### Branston Womens' Institute

Held the 2nd Tuesday of each month. We are a friendly group and try to mix our meetings with interesting talks, craft, trips and social events. It is for ladies of any age. Visitors are most welcome. Contact Mrs Barbara Reeves, President, Tel. 01283 546536

## Walton-on-Trent WI

Every 2nd Tuesday of the month at 7.15pm Walton-on-Trent WI. We are a small friendly group who meet in Walton Village Hall. Come and join us for fun, friendship, learning and sharing. For more information contact Joan on 01283 713380

## WEDNESDAY 10TH JULY

### Stretton & Claymills Women's Institute

Meeting in the back room of the Priory Centre, Church Road, Stretton at 7.15pm on the second Wednesday of every month and new members are very welcome. For info www.strettonandclaymillswi.wordpress.com or strettonandclaymillswi@gmail.com

## THURSDAY 11TH JULY

### Burton Belles Women's Institute

From 7.15pm-9.30pm. We meet at the St Chads Centre DE14 2SS on the 2nd Thursday of the month. First timers can visit for free. £4 a month or £41 a year. Come along, make new friends, try something new and have fun. Contact: Wendy Plant Tel: 07772 548230

## COMPETITION WINNERS

Congratulations to our **Paradise Island Golf** competition winners, each winning an **Unlimited Family Pass** valid for one month:

**Kris Crowley, Stretton**  
**Chris Benning, Stretton**  
**Loretta Nicholas, Barton**  
**Eleanor Parker, Stretton**

Look out elsewhere in **LOCAL LINKS** this month to win a **£200 Voucher from Home of Floors.**

## LAST MONTH'S SUDOKU PUZZLE SOLUTION

4	7	3	8	6	2	9	1	5
6	5	8	4	9	1	3	7	2
2	9	1	3	5	7	4	8	6
5	6	4	1	8	9	7	2	3
3	1	9	7	2	6	8	5	4
8	2	7	5	4	3	6	9	1
9	3	5	2	7	4	1	6	8
7	4	2	6	1	8	5	3	9
1	8	6	9	3	5	2	4	7



## You can rely on a Worcester...

The only gas boiler manufacturer to be awarded **Which? Best Buy** for six years running!

...and you can rely on **Bcosy Heating** to install them.

# 10 MONTHS

INTEREST-FREE FINANCE  
(ON NEW WORCESTER BOILERS)



**WORCESTER**  
Bosch Group  
Accredited Installer





- Heating repairs
- Replacement radiators etc.
- Leaking pipes repaired
- Controls replaced
- New taps & general plumbing repairs
- Free quotations & no call out charge\*
- Gas safety inspections & certificates
- and much more!...

\*excludes diagnostic work



W: [WWW.BCOSYHEATING.CO.UK](http://WWW.BCOSYHEATING.CO.UK)  
E: [SERVICE@BCOSYHEATING.CO.UK](mailto:SERVICE@BCOSYHEATING.CO.UK)

01283 713592



**Yoxall Windows & Plastics Ltd.**  
*Specialists in all types of UPVC*

- 10 Year insurance backed guarantee -
- Fensa Registered -
- Energy A rated windows -
- Eco friendly -
- Triple glazing -

Finance now available!



[www.yoxallwindows.co.uk](http://www.yoxallwindows.co.uk)  
T: 01283 617 716 M: 07748 845 959

**Specialists in Tree Care**



**Fairview Arborists Ltd**  
Professional tree surgeons  
**All Aspects of Tree Surgery**  
INC. STUMP GRINDING

We provide a full range of arboricultural services to domestic & commercial clients throughout the Midlands

For a **FREE** quote call:  
**01543 473255**  
[www.fairviewarb.co.uk](http://www.fairviewarb.co.uk)

# Premier No.1 Burton Paving

BLOCK PAVING - PATIO SLABS  
LANDSCAPING BRICKWORK - TURFING  
FENCING - PRESSURE CLEANING  
GRAVEL - TARMACADAM

- NO DEPOSIT REQUIRED
- NO PAYMENT UNTIL COMPLETELY SATISFIED
- 7 YEAR GUARANTEES
- QUALITY YOU CAN AFFORD
- 14 DAY COOLING OFF PERIOD
- REFERENCES AVAILABLE

OFFICE: 01283 295 514 - DIRECT: 07772 006 036

87 Anglesey Road, Burton-On-Trent, DE14 3PF

Email: [premier.no.1paving@gmail.com](mailto:premier.no.1paving@gmail.com)



# Has Your Double Glazing Steamed Up?

All Glazing Backed By Our  
**25 YEAR  
GUARANTEE**

Priority Freephone

**0800 61 21 118**

**cloudy2** CLEAR  
WINDOWS  
REPLACING YOUR FAILED DOUBLE GLAZING



[www.cloudy2clear.com](http://www.cloudy2clear.com)

Call us on 01283 547726 or visit us in store at: Burton Indoor Market, Burton-On-Trent, DE14 1HA



## THE MOBILITY CENTRE

Specialists in personal mobility & scooters  
**IN BURTON**



Motability



**INSIDE BURTON  
MARKET HALL**

Call us on  
**01283 547726**

Aids for Daily Living

Rise & Recline Chairs

Mobility Aids

Scooters

Bath Lifts

Walking Aids

Wheelchairs

Open Monday to Saturday  
9.30am - 3.30pm

**HAVE YOUR SCOOTER SERVICED READY FOR SUMMER...**

**YOUR LOCAL MOTABILITY SPECIALIST**

**BOOK ONLINE OR CALL: 01283 544389**

- All skip sizes
- All areas
- Same day delivery
- Now offering Grab Hire
- Fully Licensed
- Road Permits Arranged



Nicolson Way, Off Wellington Road, Burton on Trent, Staffs DE14 2AW

**FAMILY RUN BUSINESS, FRIENDLY STAFF, QUICK RESPONSE**  
[www.golding-skips.co.uk](http://www.golding-skips.co.uk)



**GOLDING**  
SKIP HIRE



# Peter Coates Traditional Butchers

Alrewas~Borrowash~Tamworth~Wollaton

## 'BARBECUE AT COATES'

Whether it's the basics your wanting  
or something a little bit special  
Coates make the widest range of quality  
barbecue products guaranteed to impress!

- :Home made Beef, Lamb, pork & chicken burgers
- :Home made Sausages 12 delicious flavours, kebabs & koftas
- :Marinated Beef, Pork, Chicken & Lamb steaks

[www.coatestraditionalbutchers.co.uk](http://www.coatestraditionalbutchers.co.uk)

Now Shop on-line



PACKINGTON  
"FREE RANGE"

**A family  
Business  
for over  
110 years**

100 Main street  
Alrewas  
Burton on Trent  
Staffordshire  
De13 7ae

**TEL: 01283790205**

[info@coatestraditionalbutchers.co.uk](mailto:info@coatestraditionalbutchers.co.uk)

# Beach Body Confidence by Rebecca Tucker

Does the thought of getting into swimwear fill you with dread? Do you spend all your time on the beach covered up and feeling self-conscious instead of relaxing and enjoying your time away? These nutritional tips will help you to throw aside any insecurities and radiate confidence on holiday - and all year round!

## Nutritional homework:

Try starting the day with a cleansing cup of fresh ginger and lemon tea (mix peeled and grated ginger and squeezed lemon juice with boiling water) for a couple of weeks before you go away. This will cleanse the digestive system, helping to beat the bloat.

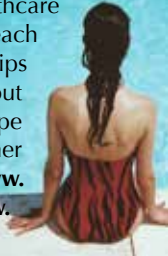
You also need to up your protein intake two weeks before you go away, protein rich fish will make you feel fuller for longer and stop you snacking.

## You are what you eat:

Carbs certainly aren't the enemy, but ditching processed (also known as refined) carbs is an effective way to see results. This is because simple carbohydrates like white pasta, white bread and white potatoes are metabolised very quickly into sugar by the body, which can then be turned into fat. Refined carbohydrates also lack the fibre, fats and protein that help you feel full, meaning you're more likely to over-eat. So in the run up to your

holiday, try cutting back and swapping refined carbs for high-fibre foods like beans, brown rice and nuts. Instead of white toast and sugary jam for breakfast, toast some tummy-friendly rye bread (which doesn't spike your blood sugar levels) and eat with a protein-rich poached egg, which will fill you up until lunchtime.

Rebecca Tucker is a registered nutritional therapist practising at the Natural Healthcare Centre. For more beach body confidence tips or to find out about her four week Shape Up for Summer Programme visit [www.nourishbalanceglow.com](http://www.nourishbalanceglow.com)





THE FIRM YOU CAN TRUST  
**BURTON**  
PAVING & LANDSCAPING

- Block paving & patios
- Tarmac driveways
- Fencing
- Retaining walls
- General landscaping
- 10 year guarantee
- No deposits required until completion.

T: 01283 329711  
M: 07956 149399  
E: [premierburton@gmail.com](mailto:premierburton@gmail.com)  
W: [www.burtonpavingandlandscaping.co.uk](http://www.burtonpavingandlandscaping.co.uk)



3 Horninglow Road North  
Burton-Upon-Trent  
Staffordshire  
DE13 0SL



## LOCAL LINKS SUDOKU

	7					9		
	5							
		1		5	7	4		6
			1		9		2	3
		9		2		8		
8	2		5		3			
9		5	2	7		1		
								3
		6						4

Sudoku is a logic puzzle where you follow one simple rule:  
Simply fill in the boxes so that the nine rows, the  
nine columns, and the nine 3x3 squares  
all contain every digit from 1-9.

LJS-79-57

## Trust the domestic cleaning experts at MOLLY MAID

That's what tens of thousands of people around the world do!

- Uniformed and professionally trained staff
- 100% guaranteed and fully insured
- Regular or occasional cleans
- Free in-home estimate
- All materials supplied
- No contracts

More  
affordable  
than you  
think!



01283 351770

[gill-dawson@mollymaid.co.uk](mailto:gill-dawson@mollymaid.co.uk)

[www.mollymaid.co.uk/burton-upon-trent](http://www.mollymaid.co.uk/burton-upon-trent)

**MOLLY MAID**

# Alrewas Motors



M.O.T  
Servicing  
Mechanical  
Repairs

## Now Fitting Tyres at Competitive Rates

Your **Local** M.O.T Testing Station

Courtesy Car Available

Friendly Reliable Service

All Major Credit /Debit Cards Accepted

Free Collection & Delivery in Local Area

Book today

# 01283 790 104

Unit 1, Station Yard, Alrewas, Burton on Trent, DE13 7BD  
Follow signs for National Memorial Arboretum



Established in  
**30**  
YEARS

**SMITH  
PARTNERSHIP**  
SOLICITORS

# BUYING OR SELLING A PROPERTY?

**OUR EXPERT**



Sarah Southall

Please quote CoMag19 when contacting us.

Working with Smith Partnership is as *simple as* **0330 123 1229**

OFFICES IN:  
Derby, Burton, Leicester & Swadlincote  
[www.smithpartnership.co.uk](http://www.smithpartnership.co.uk)

 @smithpartnership  @smithpship



**SALE NOW ON! - SALE NOW ON! - SALE NOW ON!**



**Home  
and  
Trade**



**T:** 01283 535421    **E:** [sales@homeandtrade.co.uk](mailto:sales@homeandtrade.co.uk)  
**W:** [www.homeandtrade.co.uk](http://www.homeandtrade.co.uk)  
Electric Street, Burton-on-Trent, DE14 1RQ